

# SymLine<sup>®</sup>

Chemical Waste Systems

SymLine<sup>®</sup> is a brand of



The SymLine<sup>®</sup> innovation:

**FLEXIBLE TUBES FOR LIQUID WASTES -  
FLEXTUBE & FLEXTUBE PRO MADE FROM  
PTFE, FLEXIBLE AND RESISTANT.**

**NEW**

**THE RIGHT STRATEGY  
FOR LIQUID WASTE.**





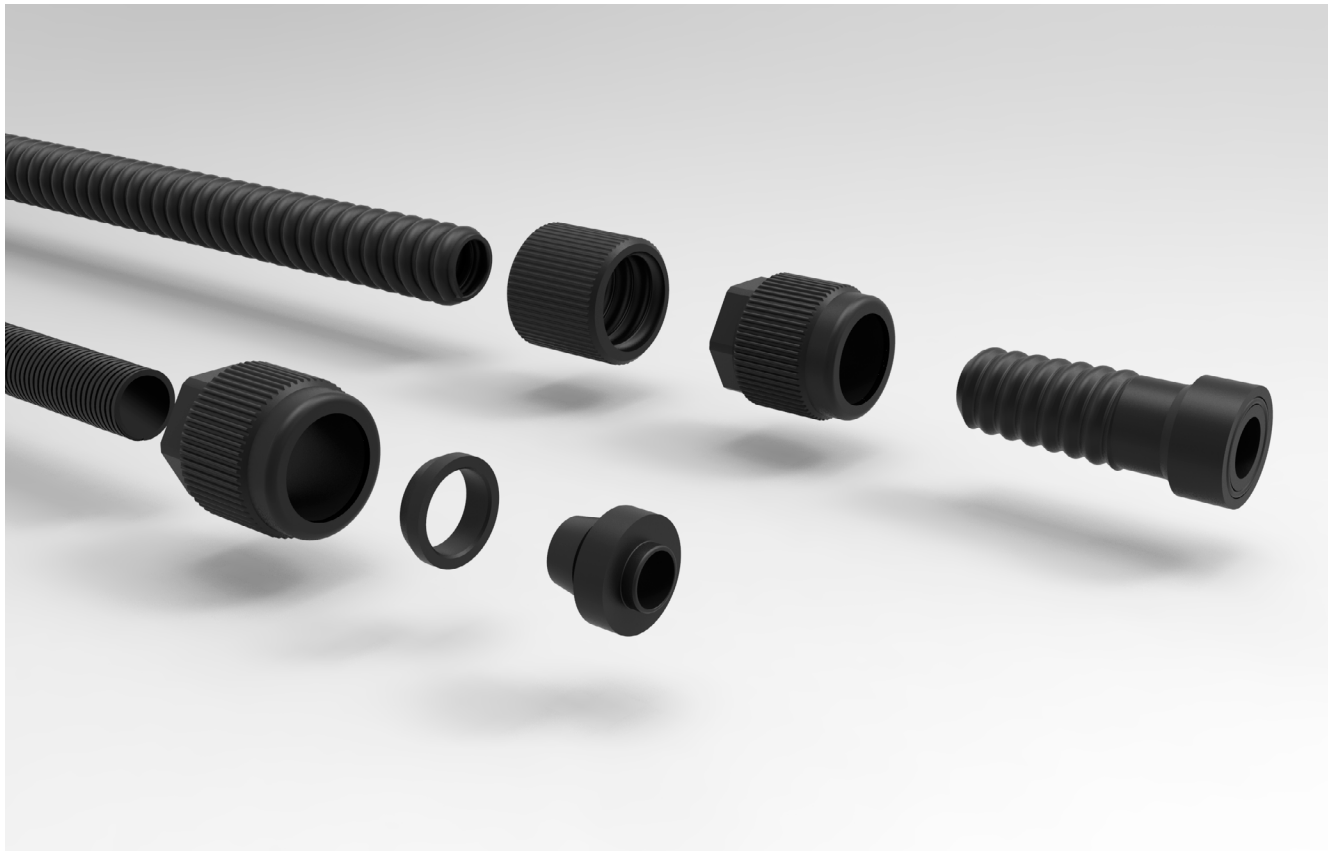
The SymLine® innovation:

**FLEXIBLE TUBES FOR LIQUID WASTES -  
FLEXTUBE & FLEXTUBE PRO MADE FROM PTFE,  
FLEXIBLE AND RESISTANT.**

On account of its small outer diameter, flexible tubes can be used in safety cabinets observing the specified maximum dimension for drillings. Depending on respective application, a range of different lengths are available. The flexible tubes are the ideal solution for installation in confined spaces since they can be placed easily into clearances and provide the flexibility required in safety cabinets with pull-out containers.

**The SymLine® flexible tubes have been optimized in every step. Material, bending radius, screw connection and sealing up to the inner wall of tube.**

- » **Made from PTFE to ensure the best possible chemical resistance**
- » **Optimized screw connection and sealing**
- » **Electrostatic conductive < 10<sup>6</sup> (max) Ω**
- » **Flexibility**
  - Tubes can be shortened easily, just mount the screw connection and sealing - ready to install
  - Increased bending radius
  - Complied to the specified maximum dimension for drillings in safety cabinets
- » **Tubes fit to every existing system**
- » **SymLine® FlexTube Pro with unruffled inner wall, improves rests of waste and residues in tubes**



Version:

**FLEXIBLE TUBE - SymLine® FlexTube:**

Ø 19.8 mm outer diameter, rough waved optic, inner wall waved.  
PTFE-electrostatic conductive.

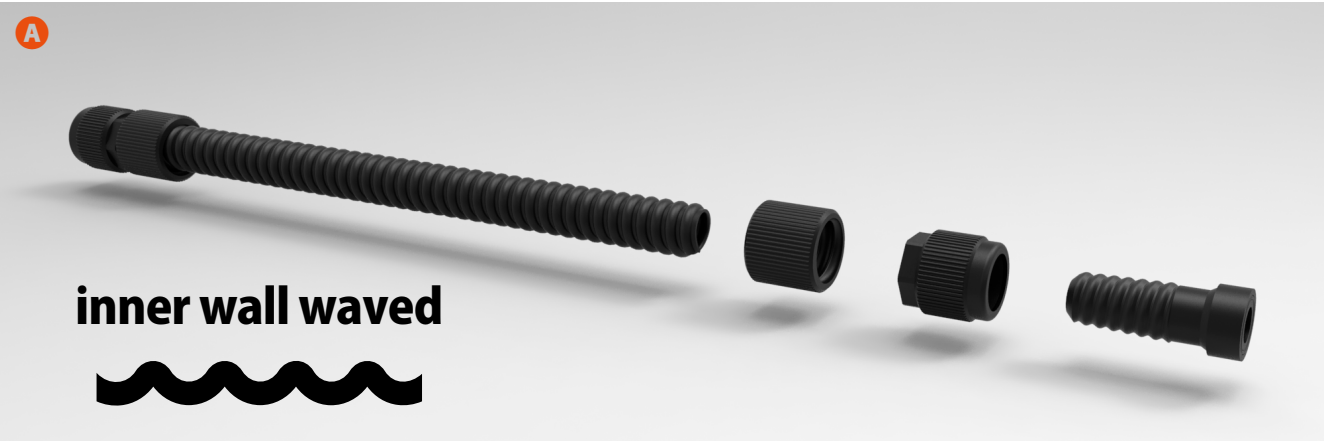


Fig.	Part No.	Description	Material
A	106 569	SymLine® FlexTube GL 25 (f), Length 600 mm, Ø 19.8 mm OD	PTFE-ec
	106 568	SymLine® FlexTube GL 25 (f), Length 1000 mm, Ø 19.8 mm OD	PTFE-ec
	106 567	SymLine® FlexTube GL 25 (f), Length 1500 mm, Ø 19.8 mm OD	PTFE-ec
	106 566	SymLine® FlexTube GL 25 (f), Length 2500 mm, Ø 19.8 mm OD	PTFE-ec

Version:

**FLEXIBLE TUBE - SymLine® FlexTube Pro:**

Ø 16.9 mm outer diameter, fine waved optic, inner wall unruffled.  
PTFE-electrostatic conductive.

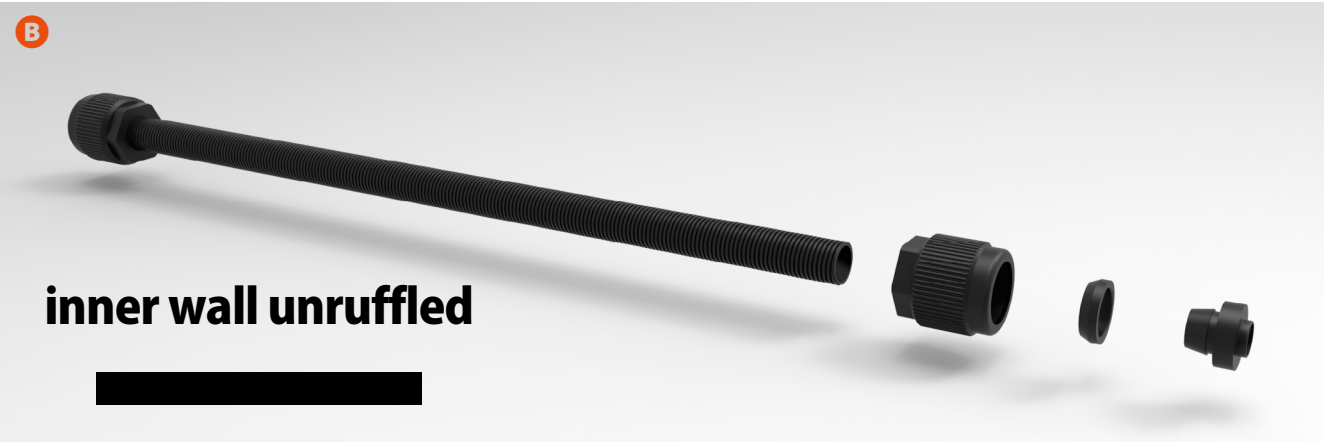
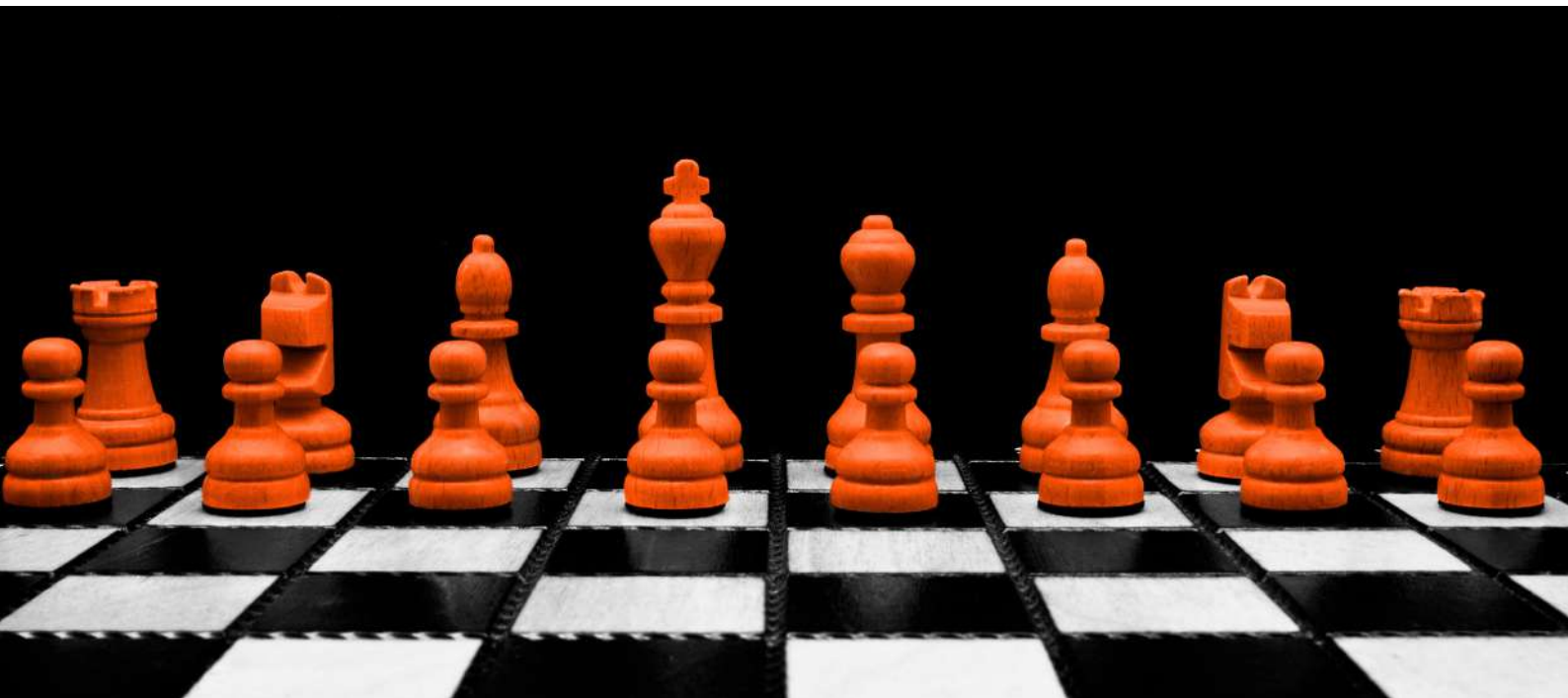


Fig.	Part No.	Description	Material
B	106 575	SymLine® FlexTube Pro GL 25 (f), Length 600 mm, Ø 16.9 mm OD	PTFE-ec
	106 574	SymLine® FlexTube Pro GL 25 (f), Length 1000 mm, Ø 16.9 mm OD	PTFE-ec
	106 573	SymLine® FlexTube Pro GL 25 (f), Length 1500 mm, Ø 16.9 mm OD	PTFE-ec
	106 572	SymLine® FlexTube Pro GL 25 (f), Length 2500 mm, Ø 16.9 mm OD	PTFE-ec



S.C.A.T. Europe GmbH • Opelstraße 3 • D-64546 Mörfelden  
Tel.: +49 - (0) 6105 - 305 586 - 0 • Fax: +49 - (0) 6105 - 305 586 - 99  
e-Mail: [info@SymLine.de](mailto:info@SymLine.de) • Web: [www.SymLine.de](http://www.SymLine.de)

