

SymLine[®]

Chemical Waste Systems

SymLine[®] is a brand of

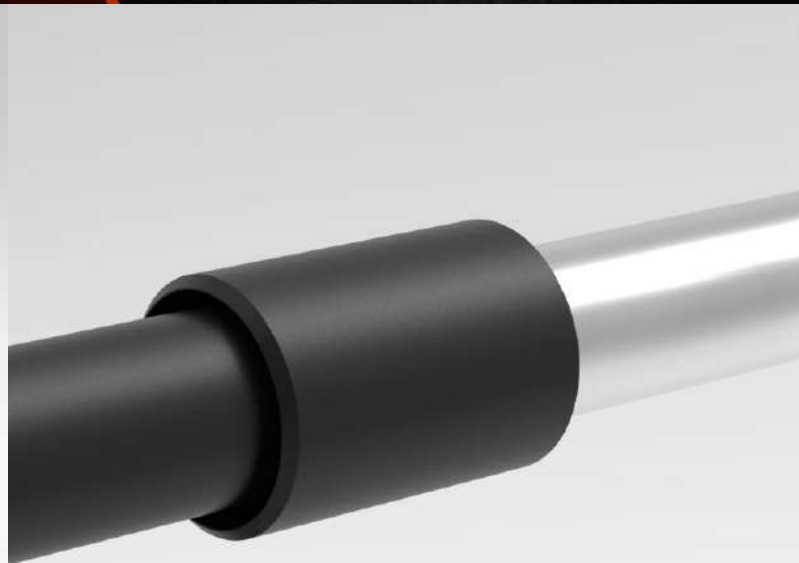
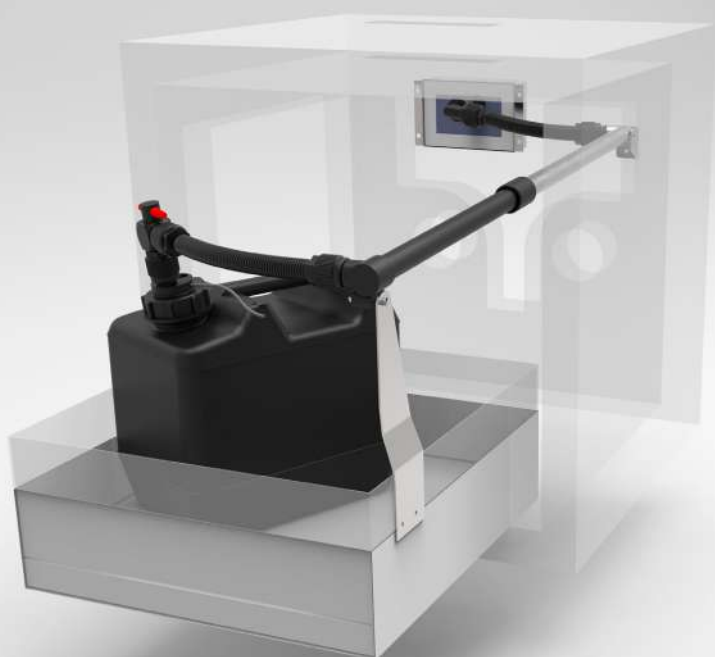


The SymLine[®] innovation:

THE TELESCOPE SYSTEM - FOR SAFETY CABINETS WITH EXTENDIBLE ELEMENTS.



THE RIGHT STRATEGY FOR LIQUID WASTE.



The SymLine® innovation:
**THE TELESCOPE SYSTEM - FOR SAFETY CABINETS
WITH EXTENDIBLE ELEMENTS.**

Flexible tubes have to cover a distance of e.g. 40 cm in use with extendible collecting trays. Depending on the installation, the tubes can be jammed or sagged. Liquids can accidentally be accumulated instead flowing off straightly into the collecting containers. **The SymLine® Telescope System is a new, unique arrangement which guarantees a defined decline for waste liquids into the collecting containers.**

- » Fixed position and a defined decline.
- » Improved usability and a well arranged safety cabinet.
- » Fast and safe transfer of liquid waste into the collecting containers.



» Sample application

Set up your safety cabinet with the Telescope System:
THE SYSTEM AND FASTENING-KITS.

To set up your safety cabinet with the system, you need the **Telescope System V600R and the belonging Fastening-Kit.**

| Fig. | Part No. | Description |
|------|----------|--|
| A | 106 543 | Telescope System V600R: 1x Cabinet feed-through with 90° angle, one-sided, Material: PE-HD-ec 1x Tube 300 mm with screwing, Material: PTFE-ec 1x Telescope Pipe System, Material: PE-HD-ec + Stainless steel 1,4571 1x Flexible tube 420 mm, Material: PE-HD-ec |
| - | 106 540 | Telescope System Fastening-Kit A-UBS: 1x Wall-holder 1x Drawer-holder 1x Fastening Material Set |
| - | 106 541 | Telescope System Fastening-Kit A-UBT90: 1x Wall-holder 1x Drawer-holder 1x Fastening Material Set |

The SymLine® Telescope System:
COMPATIBLE SAFETY CABINETS.

An overview of compatible Safety Cabinets, the quantity of **maximum installed Telescope Systems in a cabinet and the amount of needed Fastening-Kits:**

| Compatible Safety Cabinets asecos | Part No. 106 543 SymLine® V600R Telescope System | Part No. 106 540 Fastening-Kit A-UBS | Part No. 106 541 Fastening-Kit A-UBT90 |
|-----------------------------------|--|--------------------------------------|--|
| UB90.060.059.S | 1 ^{a)} | 1 ^{b)} | - |
| UB90.060.110.2S | 2 ^{a)} | 2 ^{b)} | - |
| UB90.060.110.ST | 1 ^{a)} | 1 ^{b)} | - |
| UB90.060.140.S2T | 1 ^{a)} | 1 ^{b)} | - |
| UB-T-90 | 1 ^{a)} | - | 1 ^{b)} |

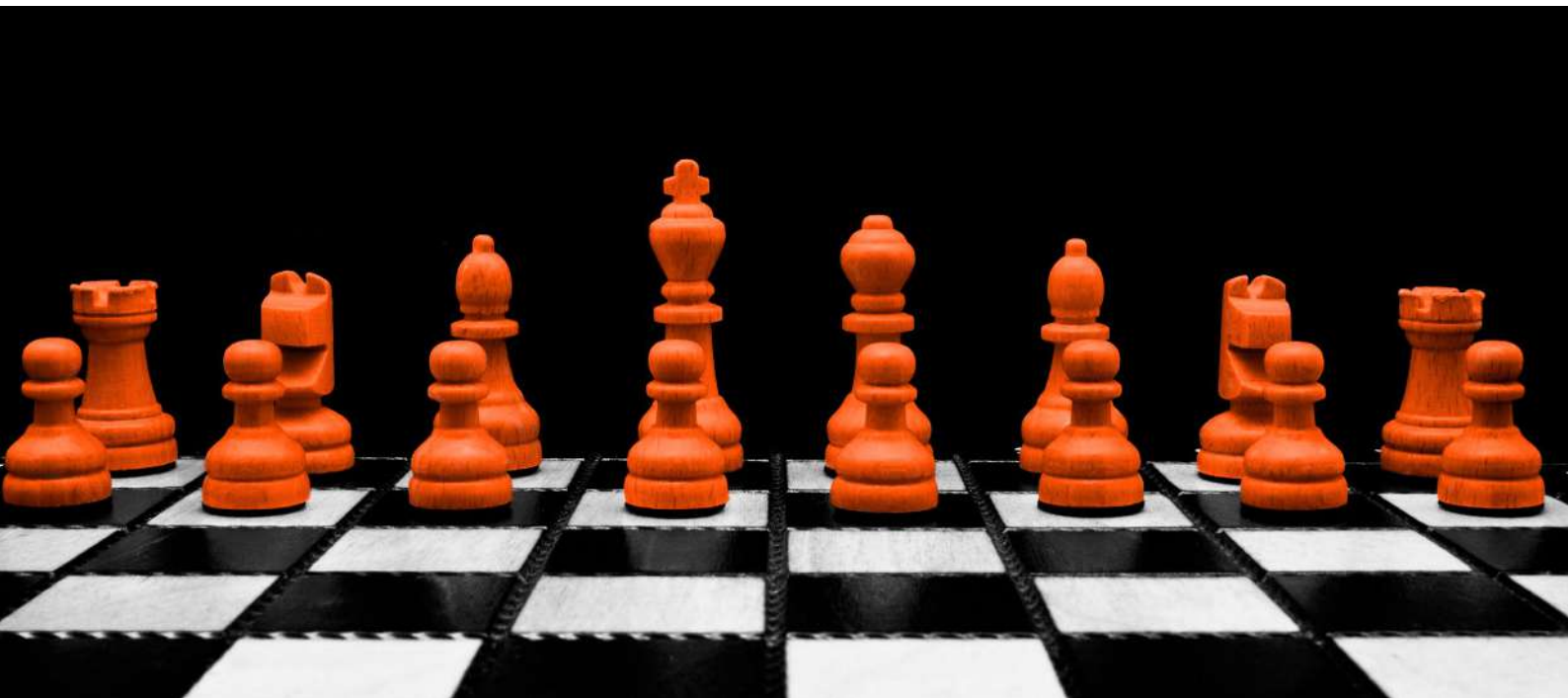
^{a)} Maximum quantity of installed Telescope Systems for this Cabinet-Type. ^{b)} Amount of needed Fastening-Kits.

» Further system solutions regarding safety cabinets (e.g. Düperthal) you will receive on request.

» Additional SymLine® products inside and outside of the Safety Cabinets have to be ordered separately.

SymLine[®]
Chemical Waste Systems

SymLine[®] is a brand of



S.C.A.T. Europe GmbH • Opelstraße 3 • D-64546 Mörfelden
Tel.: +49 - (0) 6105 - 305 586 - 0 • Fax: +49 - (0) 6105 - 305 586 - 99
e-Mail: info@SymLine.de • Web: www.SymLine.de



#200021 / 18112015